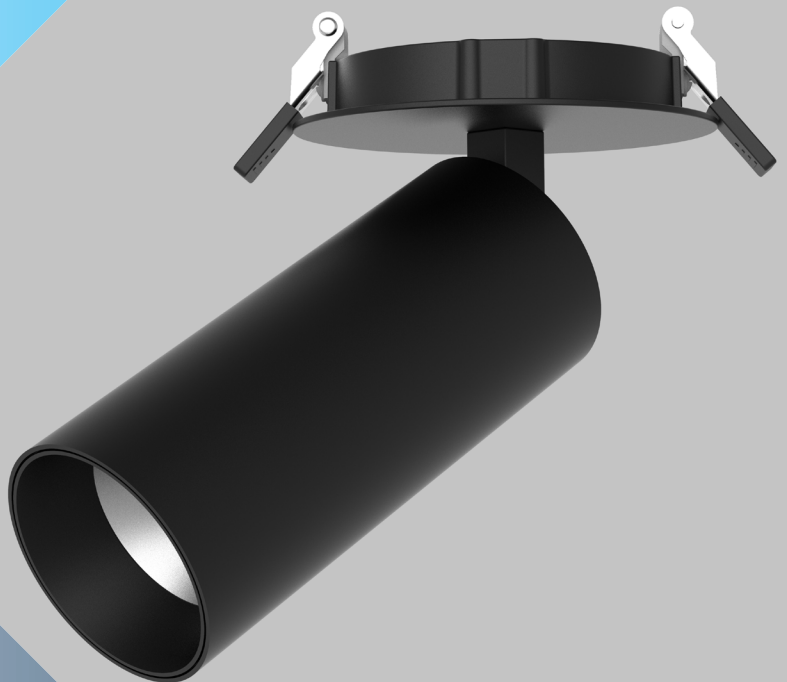


I APOLO
EMPOL18W
Recessed tracklight 18W



HIGH EFFICIENCY
101 lm/W



GARANTÍA



HIGH QUALITY



CRI > 90

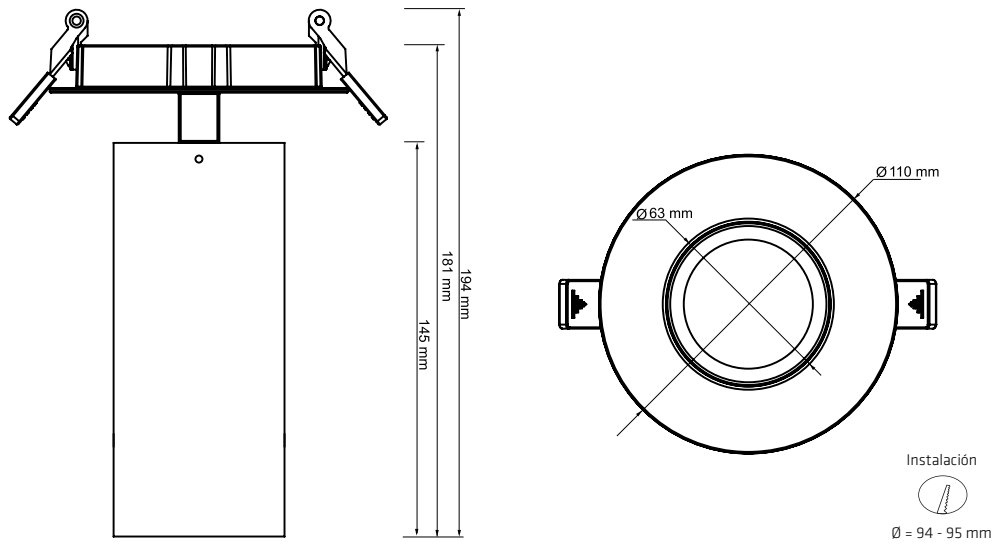


FLICKER FREE

SPECIFICATIONS · PRODUCT DATA

Electrical data	
Input	220 ~ 240 Vac
Mains frequency	50/60Hz
Power	18W
Power factor	> 0,9
LEDs n°	1 chip COB
LED power	18W
IEC protection class	Class I
Photometric data	
Luminous efficiency	101 lm/W
CRI (Ra)	> 90
Luminous lux (Nominal / Real) CCT	2160 lm · 1818 lm · 4000K · BN 2124lm · 1710 lm · 2700K · BC
Luminous intensity	5815 cd
SDCM Standard deviation colour adjustment	<3
Degree of opening	15°/23°/38°/45°/60°
Working Temp.	-20°C ~ +40°C
Switchovers n°	30.000
Certifications	CE, RoHS
Energy efficiency	A+
Working life	50.000 (L70B10)
Materials and physical characteristics	
Body	Aluminum alloy
Diffuser	PC
Ring	Aluminum alloy
Finish	Black RAL 9005 White RAL 9003
Measurements in mm (diameter x length)	Ø110 X 194
Weight (g)	
Characteristics	
IP Rating	IP20
IK Rating	IK06
UGR Rating	< 22
Flicker	No
Options	
Dimming option	Opcional (See table)
Emergency kit option	No
Sensor movement option	No
Packaging	
Packaging measurements	615 X 495 X 245
Packaging weight (kg)	13.6
Units (units/box)	20 units

Measurements in mm



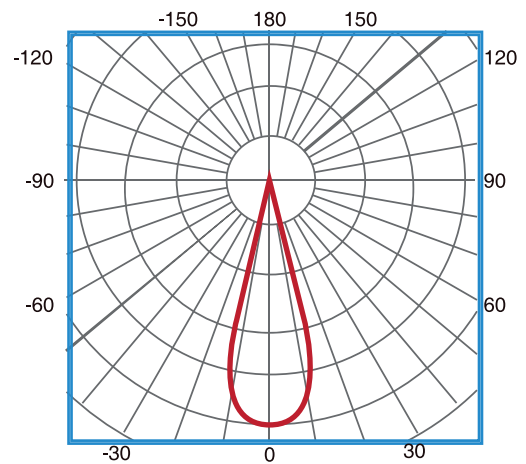
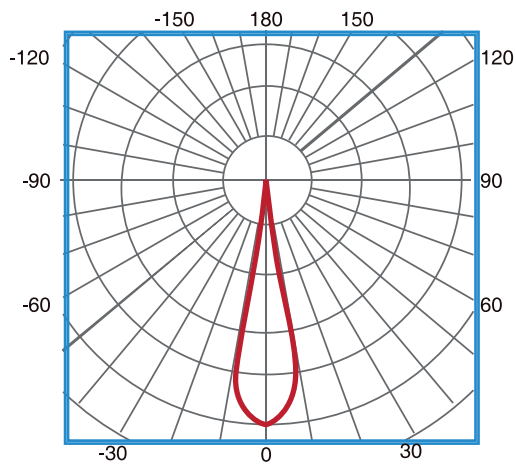
Optics

Beam angle 15°

H (m)	Diameter (m)	E _{max} (lx)
1	0,38	5773
2	0,76	1443
3	1,14	641
4	1,51	361

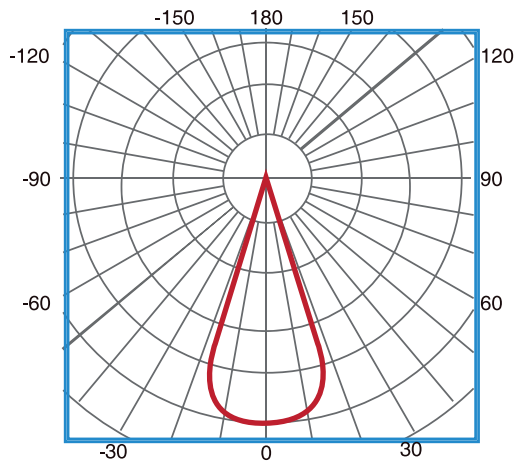
Beam angle 23°

H (m)	Diameter (m)	E _{max} (lx)
1	0,44	5045
2	0,87	1261
3	1,31	561
4	1,74	315



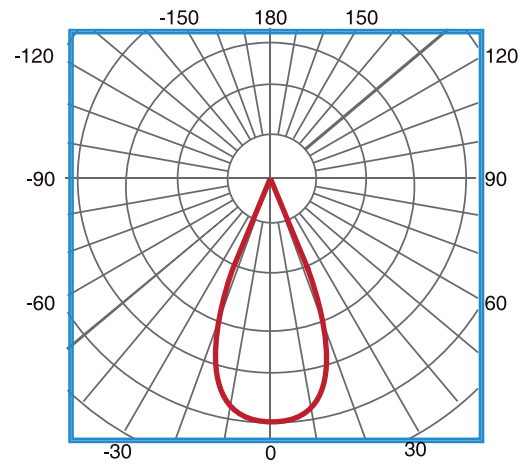
Beam angle 38°

H (m)	Diámetro (m)	Emax (lx)
1	0.61	3495
2	1.23	874
3	1.84	388
4	2.45	218



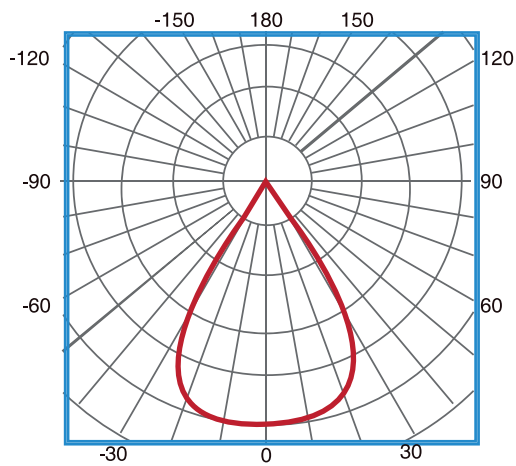
Beam angle 45°


H (m)	Diámetro (m)	Emax (lx)
1	0.76	2674
2	1.52	668
3	2.28	297
4	3.04	167



Beam angle 60°

H (m)	Diámetro (m)	Emax (lx)
1	0.81	2388
2	1.62	597
3	2.42	265
4	3.23	149



References												
	CRI		CCT		β			RING		DIMMING OPTIONS		
EMPOL18	9	> 90	4	4000K	15	15°	B	White RAL 9003	B	White	D	DimmingTRIAC
			3	2700K	23	23°	N	Black. RAL 9005	N	Black		
					38	38°			D	Gold		
					45	45°						
					60	60°						

